



TO LET

**Hamlet Court Road,
Westcliff-On-Sea SS0 7LJ**

£700 PCM

- Two Double Bedrooms
- Fully Double Glazed
- Modern Kitchen & Bathroom
- Located A Short Walk From Westcliff Train Station
- Close To Seafront & Town Centre
- Second Floor Flat

Appointmoor Rental 72 The Ridgeway,
Chalkwell, Westcliff, Essex, SS0 8NU
T. 01702 719 966 W. appointmoor.co.uk

appointmoor

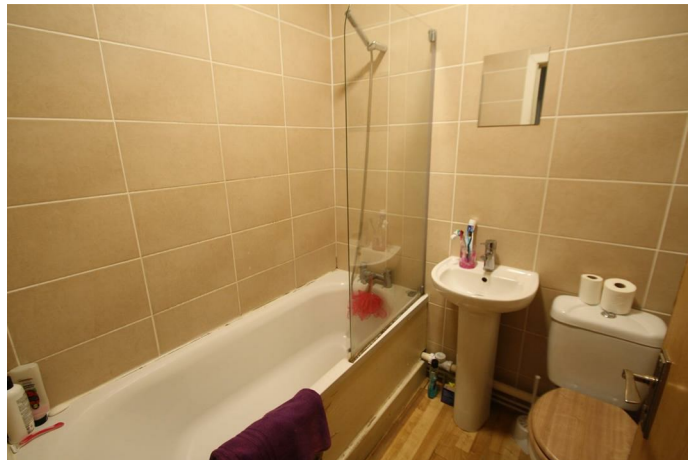
Description

Appointmentmoor have available to let this 2 bedroom second floor flat located in central Westcliff on Sea. The property consists of TWO DOUBLE BEDROOMS. Modern fitted kitchen. Modern three piece bathroom. Spacious lounge. Fully double glazed.

Located a short walk away from Westcliff c2c

Train Station, local bus routes and shops.

Call our lettings team today to arrange an accompanied viewing.



Energy Efficiency Rating		Current	Potential
Very energy efficient - lower running costs			
(92 plus) A			
(81-91) B			
(69-80) C			
(55-68) D			
(39-54) E		40	40
(21-38) F			
(1-20) G			
Not energy efficient - higher running costs			
England & Wales		EU Directive 2002/91/EC	

Environmental Impact (CO ₂) Rating		Current	Potential
Very environmentally friendly - lower CO ₂ emissions			
(92 plus) A			
(81-91) B			
(69-80) C			
(55-68) D			
(39-54) E		35	35
(21-38) F			
(1-20) G			
Not environmentally friendly - higher CO ₂ emissions			
England & Wales		EU Directive 2002/91/EC	